

## MDT THIN CHEEK RISER

V1.0 February 2021



### MDT THIN CHEEK RISER

Thank you for choosing this high quality MDT accessory! The MDT Thin Cheek Riser is designed to be a direct replacement for the standard SRS family of cheek risers, which provides a narrower footprint and added shooter comfort. The narrower profile allows the cheek riser to be lowered all the way down and centred on the buttstock without interfering with the thumbwheels, making shooting weakside easier. With the addition of the top slots, the cheek riser is also able to be shifted forward or rearward slightly as per shooter preference. Additionally, the adhesive-backed, foam pad insulates the cheek riser plastic and provides a more comfortable interface for the shooter, making long strings of fire or long periods of time on the gun more enjoyable.

**CAUTION:** AVOID RESTING OR HITTING THE BARREL AGAINST ANY SURFACE WHILE HANDLING THE ACTION, STOCK, AND CHASSIS.

## Installation

**Tools needed:** 1/8" Hex Key

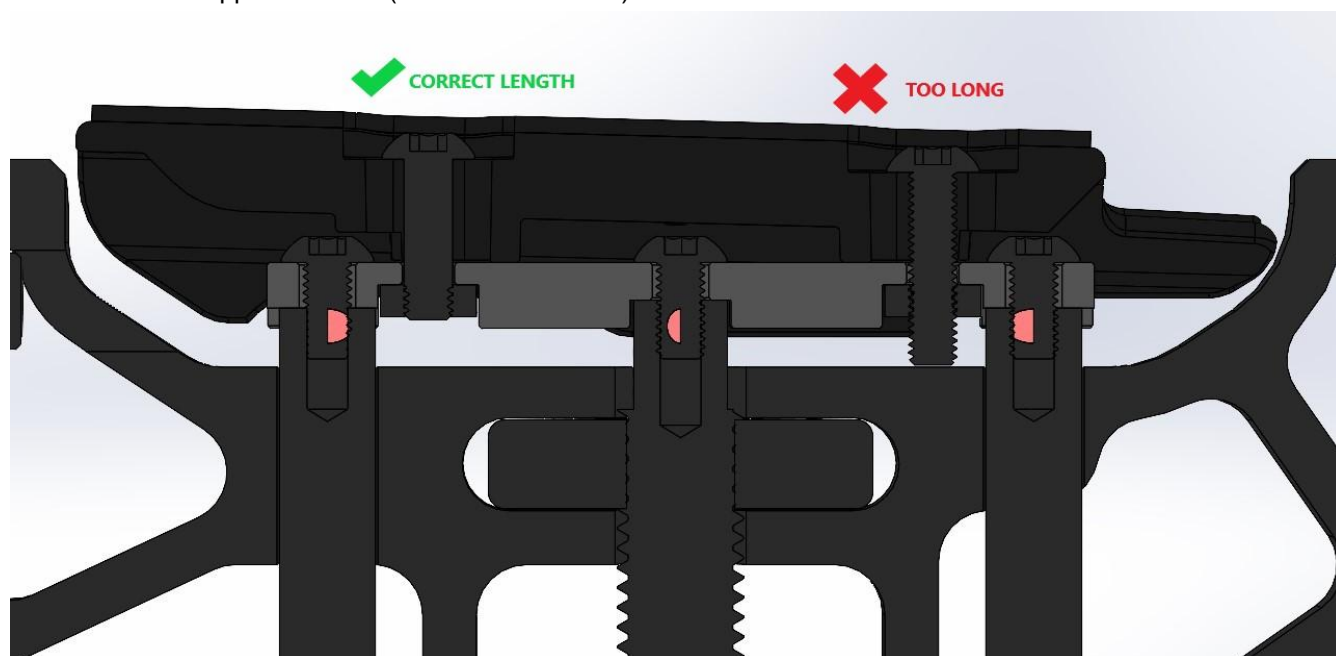
**Approximate Time:** 2-3 minutes

## Pre-Installation

1. Ensure that the firearm is unloaded and pointed in a safe direction.
2. Remove the magazine (if inserted) and bolt.

## Installing the MDT Thin Cheek Riser

1. Using a 1/8" allen key, remove the currently installed cheek riser from your chassis.
2. Depending on which buttstock you're installing the MDT Thin Cheek Riser on to, you will need to select the correct screws that are supplied so that you're able to get the maximum adjustment out of your buttstock. For the SRS-X Elite SHORT buttstock, be sure to use the longer supplied screws (#10-32 x 3/4" BHCS), for every other buttstock use the shorter supplied screws (#10-32 x 5/8" BHCS).

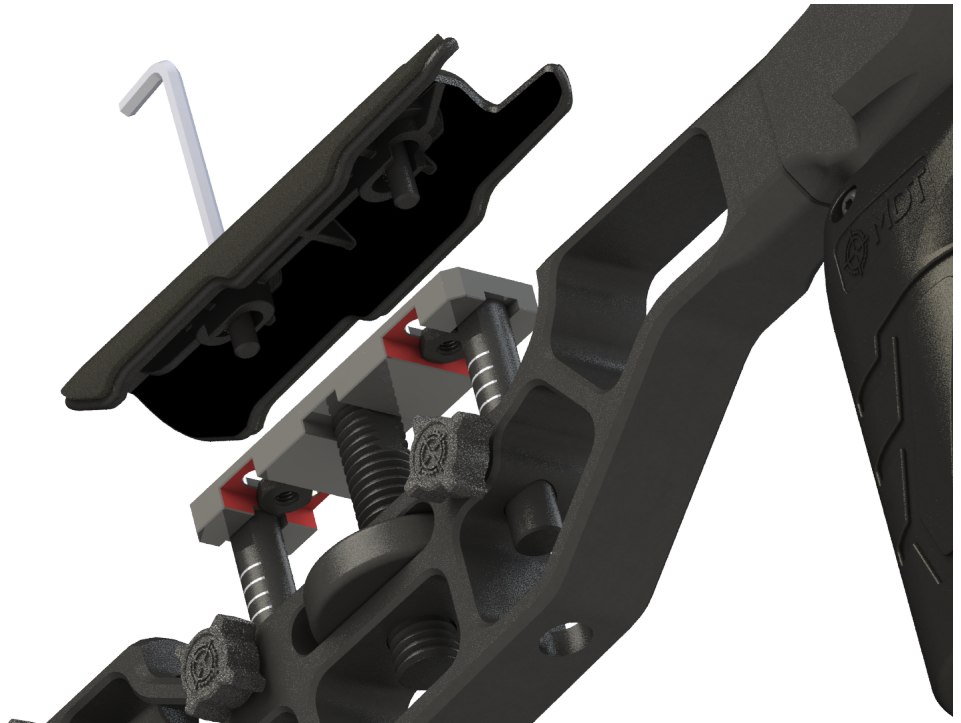


Detailed view of SRS-X Elite cheek riser and cant plate which it attaches to.

3. You may find that it is easier to install the MDT Thin Cheek Riser with the whole cheek riser assembly removed from the buttstock, however, it is not required. If you would like to remove the whole cheek riser assembly, simply loosen the side thumb wheels and raise the cheek riser up until it can be removed from the buttstock.
4. When installing the new cheek riser, insert the correct #10-32 screw through the cheek riser and hold it in place with the same 1/8" allen key that you used to remove the previous cheek riser.



5. With your other hand, hold the #10-32 hex nut in the lot on the underside of the cheek riser cant plate (highlighted in red below).

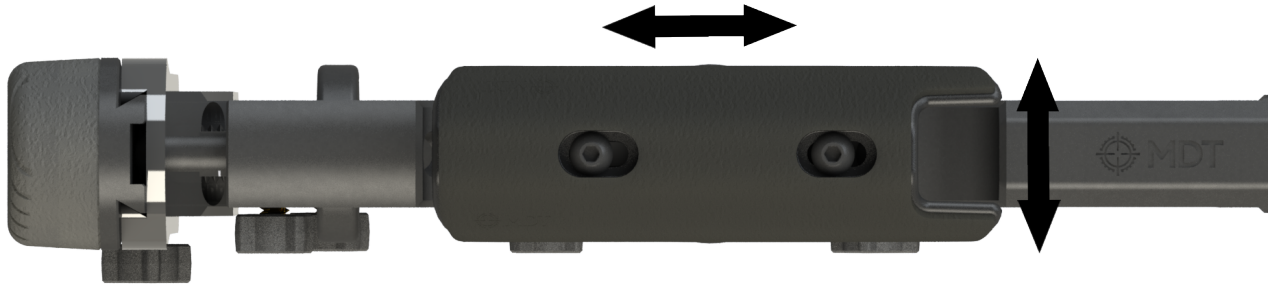


6. Keeping the hex nut aligned with your hand, lower the cheek riser down on to the cheek riser assembly and thread the #10-32 screw into the hex nut 2-3 threads, but do not fully tighten it.



7. Repeat the same process with the other #10-32 screw and hex nut.

- Before fully tightening the screws, ensure to align the cheek riser front-to-back and side-to-side on the buttstock. The slots in the cheek riser will allow roughly  $\frac{1}{2}$ " of front to back adjustment, and the slots in the cheek riser cant plate offer a similar amount side to side.



Note: if the cheek riser is set too far forward or rearward in the buttstock cutout, it may contact the buttstock frame and block the machinist from lowering all the way. Check that the cheek riser is able to raise or lower to an adequate position and make adjustments as necessary.

- Once satisfied with the cheek riser position, fully tighten down the #10-32 screw until snug, or approximately 15 in-lb.

## WARRANTY

### What warranty does MDT provide?

- MDT offers a 100% satisfaction guarantee on all products. If you receive any of MDT product, but you are not completely satisfied, return it to MDT's central office within 30 days for a 100% refund.
- All our products come with lifetime support against defects.
- Performing modifications/alterations to the product voids all warranties, expressed or implied.

### How do I claim warranty on a MDT product?

- If you experience a problem with your MDT Rifle Chassis system, call us or initiate a service ticket through the MDT website.

- Warranty claims must show the product model, a contact email, a phone number, and a description of the problem.

#### **How MDT process warranty claims?**

- Upon receiving the item, MDT decides whether to accept the warranty claim, and whether to repair or replace the parts, at its discretion.
- MDT accepts no responsibility for loss or damage in transit.
- MDT pays for shipping and insurance charges for the return to the owner, ONLY after accepting the warranty claim.
- If non-warranty parts or services are required, MDT provides an estimate for approval prior to performing any service.

#### **What are the warranty limitations?**

- This warranty is exclusive and is in lieu of any and all other warranties, expressed or implied. No implied warranties of merchantability or fitness for a particular purpose are given and any and all liability for breach of any implied warranty or warranty created by law is disclaimed.
- Under no circumstances shall MDT be liable for incidental or consequential damages with respect to economic loss, injury, death or property damage, whether as a result of breach of this warranty, negligence or otherwise.

#### **Jurisdictional Exceptions:**

- Some jurisdictions do not allow limitations on how long an implied warranty lasts, so the above limitation may not apply to you.
- Some jurisdictions do not allow the exclusion or limitation of incidental or consequential damages, so the above limitation or exclusion may not apply to you completely or in part.
- This warranty gives you specific legal rights. You may also have other rights that vary from jurisdiction to jurisdiction.

## **SAFETY GUIDELINES**

### **1. ALWAYS KEEP THE MUZZLE POINTED IN A SAFE DIRECTION.**

Never allow your firearm to point at anything you do not intend to shoot. Always handle any firearm as if it were loaded and ready to shoot. UNLOAD ALL FIREARMS WHEN NOT IN USE. ALWAYS VERIFY. Load your firearm only when you are in the field or on the target range and ready to fire. Unload as soon as you finish shooting. Verify that the firearm is unloaded before storing and ALWAYS when you pick it up.

### **2. DO NOT RELY ON ANY MECHANICAL SAFETY.**

Safety devices are not a substitute for safe handling procedures. Treat every firearm as if it can fire at any time, regardless of the safety position. Do not touch the trigger until you are ready to fire.

### **3. UNDERSTAND THE TARGET AND WHAT IS BEYOND THE TARGET.**

Do not fire unless you know exactly where your shot is going, and what is beyond the expected point of impact. Never fire at a sound, a movement, or a patch of color. If you cannot see clearly what is beyond the target, DO NOT SHOOT.

### **4. NEVER SHOOT AT WATER OR AT A HARD SURFACE.**

Shooting at water, rocks, or other hard surfaces may result in bullet fragmentation with unpredictable flight paths.



## **5. USE PROPER AMMUNITION.**

The use of wrong ammunition, mixed ammunition, or improperly reloaded ammunition may result in serious injuries or death, and catastrophic damage to your firearm. Check each round before loading. If in doubt, DO NOT SHOOT.

## **6. IF THE FIREARM FAILS TO FIRE, DO NOT MOVE.**

If the ammunition does not fire when you pull the trigger, stop and keep the muzzle pointed in a safe direction. Wait 15 seconds before opening the chamber. Look away from the chamber while opening it and removing the round. In semi-automatic firearms, remove the magazine before manually cycling the round. Properly discard the round immediately. DO NOT try to fire it again.

## **7. ALWAYS WEAR EYE AND EAR PROTECTION WHEN SHOOTING.**

Wear protective shooting glasses to guard against any combustion discharges, cartridges ejection, or debris resulting from firing your firearm or firearms around you. Also, wear eye protection when you are disassembling or cleaning a firearm to guard against tensioned parts and cleaning solvents. Always use ear protection.

## **8. VERIFY THAT ACTION AND BARREL ARE CLEAR BEFORE SHOOTING.**

Before loading your gun, inspect the action and barrel to ensure there are no obstructions such as snow, mud, excess lubricant, cleaning patches, or any other foreign material.

## **9. LEARN THE PARTICULAR CHARACTERISTICS OF EACH FIREARM.**

Not all firearms are alike. Become very familiar with the firearm before shooting. Learn safe handling procedures for loading, unloading, carrying, shooting and storing each firearm before firing the first round.

## **10. SHOOT SOBER!**

NEVER handle any firearm while under the influence of alcohol, drugs, or any medication that may impair your senses in any form.

## **DISCLAIMER**

MDT SHALL NOT BE RESPONSIBLE IN ANY MANNER WHATSOEVER FOR INJURY, DEATH, OR DAMAGE TO PROPERTY AS A RESULT OF THE INTENTIONAL OR ACCIDENTAL MISUSE OF THIS PRODUCT, OR FROM ITS PROPER FUNCTION WHEN THE PRODUCT IS USED FOR PURPOSES FOR WHICH IT WAS NOT DESIGNED.